

ATLAS 100 & 150 aluminum eaves profiles for balconies and terraces

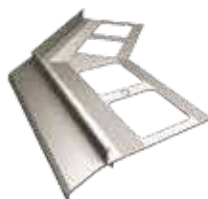
- carry off water
- resistant to weather conditions
- resistant to mechanical damage
- fast and easy to install



ATLAS 100 outer corner 90°



ATLAS 150 outer corner 90°



ATLAS 100 outer corner 135°



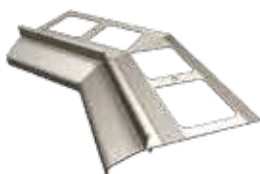
ATLAS 150 outer corner 135°



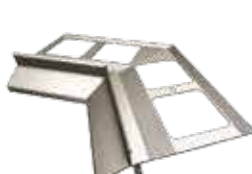
ATLAS 100 inner corner 90°



ATLAS 150 inner corner 90°



ATLAS 100 inner corner 135°



ATLAS 150 inner corner 135°



Connector



Ending

Use

Ensures efficient drainage of rainwater from balconies or other horizontal building elements finished with ceramic tiles.

Makes it possible to keep the eaves area watertight, since the construction of the profiles used in the system enables their tight combination with the waterproofing and flooring.

Substrate types — cement-based and other substrates with sufficient rigidity or load capacity

Properties

Equipped with an eaves profile carrying water off beyond the wall surface.

Possibility of attaching a gutter underneath - (only ATLAS 150 system).

Holds backer rod fixed, separating the profiles from the finishing coats

- it is placed over the draining holes.

Quick and easy to install.

Long-lasting durability - resistant to weather conditions, corrosion, aggressive environment, high pH and UV radiation.

The system is manufactured in three colour versions: grey (RAL 7037), brown (RAL 8019) and graphite (RAL 7024). It is possible to order any color from the RAL pallet (minimum order is 10 Main Profile units). Delivery time of custom orders is 14 working days.

Possibility to order the corners of any angle or arc-shaped. Delivery time of custom orders is 14 working days.

Technical data

The finishing profiles and accessories are made of polyester-coated aluminum

Weight of the main eaves profiles of ATLAS 100 system:	610 g/m
Weight of the main eaves profiles of ATLAS 150 system:	1090 g/m
Polyester coat thickness	ca. 70 µm

Application

Substrate and profiles preparation

The substrate must be sound, flat and clean. Cement-based substrates should be fully set and cured. There should be an offset (a decrease of ca. 3 mm) along the edge of the balcony or terrace of the width of the profile to be installed (80mm), so that, after the installation of the profile, its surface is at the same level with the substrate. For this purpose, the template ABS is attached to the profile and it should be embedded in the top layer during the application of base coat.

After setting of the substrate, remove the template ABS. Thus, we obtain an offset, in which we can insert the profile.

Before installation, the profiles should be carefully measured and cut to fit the edge to be finished.

Installation of system components

• Trowel the surface with the ATLAS WODER S, ATLAS WODER E or ATLAS WODER DUO waterproofing membrane. The installation of eaves profiles should start from the CORNERS. Apply the system ENDING on the profile adjoining the wall. Ensure that the profile endings contacting the wall of the building are not attached rigidly (provide an expansion joint of ca. 5 mm). Connections: MAIN PROFILE - CORNER and MAIN PROFILE - MAIN PROFILE, should be executed with the use of CONNECTORS. The ones should keep an expansion joint of 1-2 mm. The underside of the profile connections should be sealed with permanently flexible material, e.g. ATLAS ARTIS silicone. Recoat the installed profile with waterproofing membrane and then apply ATLAS SEALING TAPE or ATLAS HYDROBAND (leaving the draining holes open). Apply another coat of waterproofing membrane after ca. 3 hours. Fill the space between the profile and tiles with appropriate flexible sealants, e.g. ATLAS ARTIS silicone. Recoat the installed profile with waterproofing membrane and then apply ATLAS SEALING TAPE or ATLAS HYDROBAND (leaving the draining holes open). Apply another coat of waterproofing membrane after ca. 3 hours. Place a polyurethane expansion joint cord from the top over the draining holes. Fill the space between the profile and tiles with appropriate flexible sealants, e.g. ATLAS ARTIS silicone.

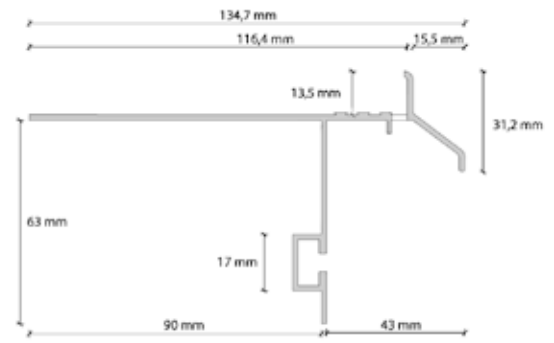
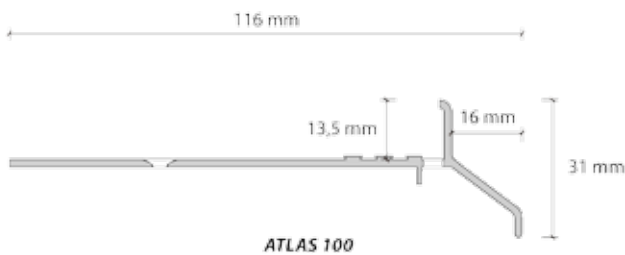
Important additional information

- The profiles should only be cut using a hand or mechanical saw suitable for aluminium cutting. It is possible to use hand or mechanical saws intended for aluminium cutting. Profiles must not be cut with tools causing a thermal effect (rapid temperature increase), e.g. an angle grinder.
- Installation work should be carried out in conditions suitable for the use of waterproofing and installation materials according to their respective technical data sheets. Protect the surfaces being coated from excessive drying and moisture.
- Use eye protection. Remove any fresh material contaminating the profiles with water, and hardened material — with an appropriate cleaning agent, safe for top coatings.
- The profiles should be transported in original packaging, in the horizontal position, protected from mechanical damage. Store the profiles indoors, protecting them from dirt, warping and scratching, in boxes, arranged in layers (maximum 10 layers)

System components

SYSTEM ATLAS 100	SYSTEM ATLAS 150
Atlas 100 Main Profile — brown	Atlas 150 Main Profile — brown
Atlas 100 Main Profile — grey	Atlas 150 Main Profile — grey
Atlas 100 Main Profile — graphite	Atlas 150 Main Profile — graphite
Atlas 100 Outer Corner 90 — brown	Atlas 150 Outer Corner 90 — brown
Atlas 100 Outer Corner 90 — grey	Atlas 150 Outer Corner 90 — grey
Atlas 100 Outer Corner 90 — graphite	Atlas 150 Outer Corner 90 — graphite
Atlas 100 Inner Corner 90 — brown	Atlas 150 Inner Corner 90 — brown
Atlas 100 Inner Corner 90 — grey	Atlas 150 Inner Corner 90 — grey
Atlas 100 Inner Corner 90 — graphite	Atlas 150 Inner Corner 90 — graphite
Atlas 100 Outer Corner 135 — brown	Atlas 150 Outer Corner 135 — brown
Atlas 100 Outer Corner 135 — grey	Atlas 150 Outer Corner 135 — grey
Atlas 100 Outside Corner 135 — graphite	Atlas 150 Outside Corner 135 — graphite
Atlas 100 Inner Corner 135 — brown	Atlas 150 Inner Corner 135 — brown
Atlas 100 Inner Corner 135 — grey	Atlas 150 Inner Corner 135 — grey
Atlas 100 Inner Corner 135 — graphite	Atlas 150 Inner Corner 135 — graphite
Atlas 100 Connector — brown	Atlas 150 Connector — brown
Atlas 100 Connector — grey	Atlas 150 Connector — grey
Atlas 100 Connector — graphite	Atlas 150 Connector — graphite
Atlas 100 Ending — brown	Atlas 150 Ending — brown
Atlas 100 Ending — grey	Atlas 150 Ending — grey
Atlas 100 Ending — graphite	Atlas 150 Ending — graphite

Profiles cross-sections

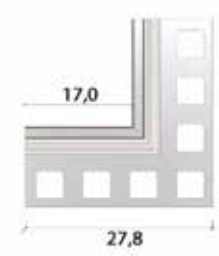


ATLAS 150

Corner view



Outer corner 90°



Inner corner 90°



Outer corner 135°



Inner corner 135°

Packaging

Type of element	Type of packaging	No. of units in packaging
Main profile: 2 m in length	foil	1
Inner or outer corner	foil	1
Connector	box	5
Ending: 1 set (1 left-hand and 1 right-hand piece)	box	2

The above information constitutes basic guidelines for the application of the product and does not release the user from the obligation of carrying out works according to engineering principles and OHS regulations. At the time of publication of this product data sheet all previous ones become void.

Date of update: 2013-07-19